

Knowledge & Experience

SKE is committed to helping clients achieve success with their SC2 implementation. Our key services include:

- Web access to all SC2 GeoPortal components without the cost of purchasing/licensing technology
- Access to the Google topographic mapping and imagery to be used as a base for client spatial data.
- Secure hosting of client spatial and business data.
- Dedicated technical support and maintenance of all IT components.
- Customization and enhancements to meet specific client needs.

About SKE Inc.

SKE Inc. is an information solutions company and the team behind the award-winning GeoPortal cloud solution. Since 1994, we have been providing project management, systems design, development, and implementation services and software solutions to governments and large corporate clients.

Example organizations and projects include:

- Hydro One Inc. - Real Estate Management System
- Infrastructure Ontario - Customer Portal & The GeoPortal for Ontario
- Ministry of Energy and Infrastructure - The Provincial Real Property Information System
- Natural Resources Canada - The Atlas of Canada
- Ministry of Aboriginal Affairs - The Aboriginal Consultation Information System (ACIS)
- Ministry of the Attorney General - The Facilities Management Information System (FMIS)



Spatial Knowledge Engineering Inc.
10 Elmview Ave • Toronto • Ontario • M2N 2J3
647-525-5142 www.skeinc.com



SPATIAL CLOUD COMPUTING
SERVICES



Concept and Components

By leveraging the power of geography and mapping your assets, you not only make your data location aware, you are also able to see spatial patterns that words and numbers cannot describe. Through a common reference, geography becomes the integration point for all related business data and systems, thus, creating a unified view of your information resources.

SKE SC2 Services offering provides ready-to-use geo-data (including Google topographic mapping and imagery); GeoPortal technologies fully hosted as a service; and, the knowledge and experience to make it work for you. All you have to do is add your business data.

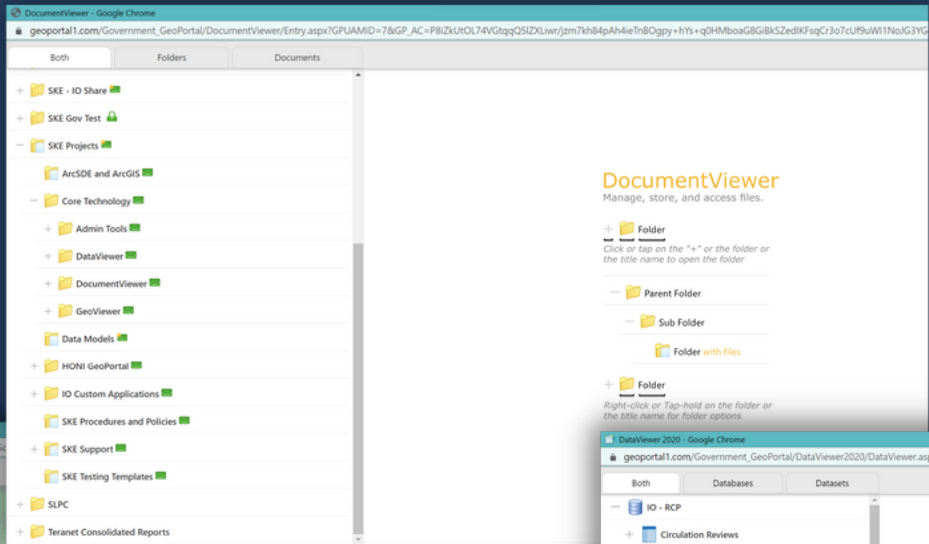
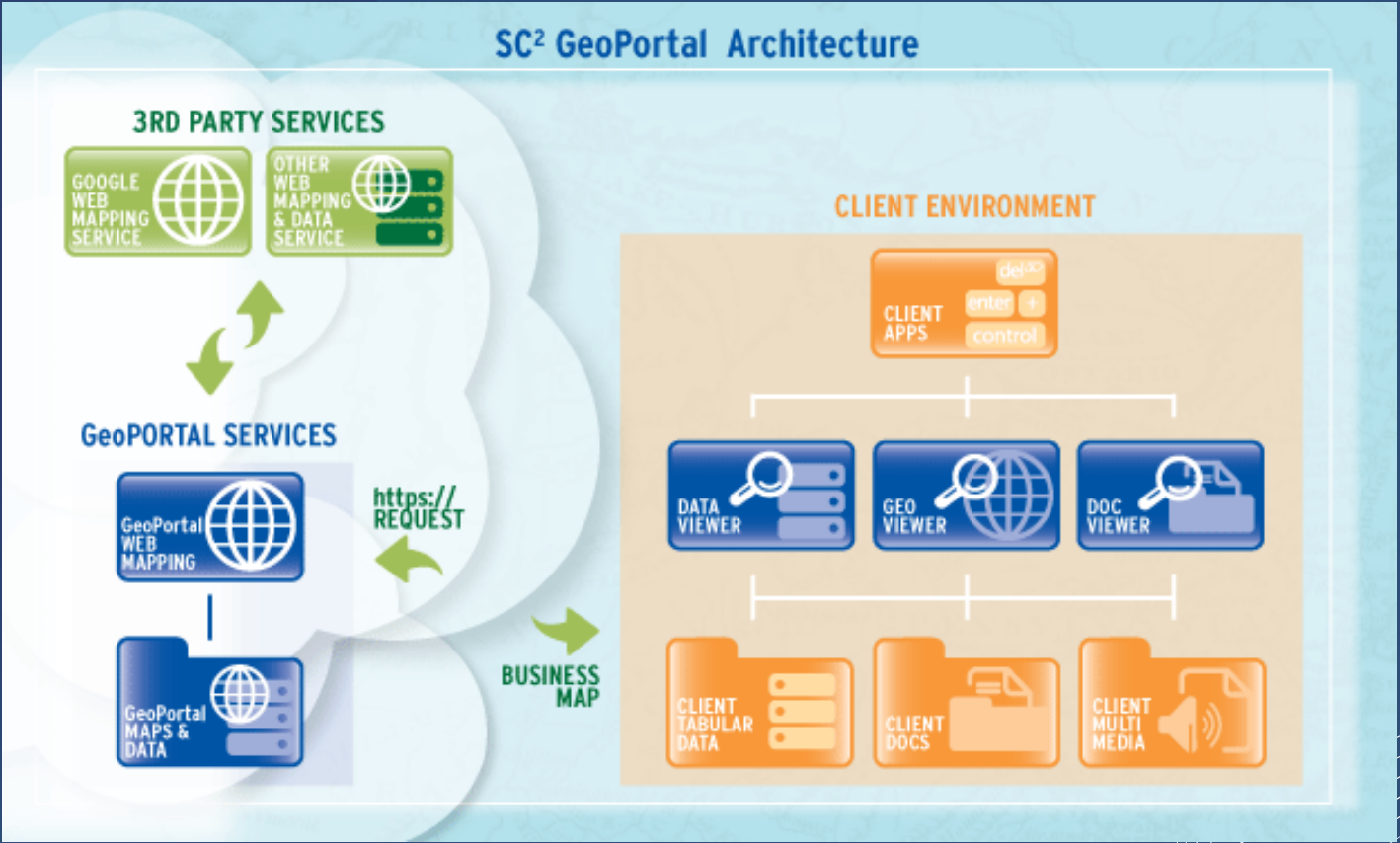
The SC2 GeoPortal technology suite consists of ready-to-use web tools and information services. The core GeoPortal tools include:

GeoViewer

A map based information search and access tool that enables user to geo-visualize their mapped assets and access related business information.

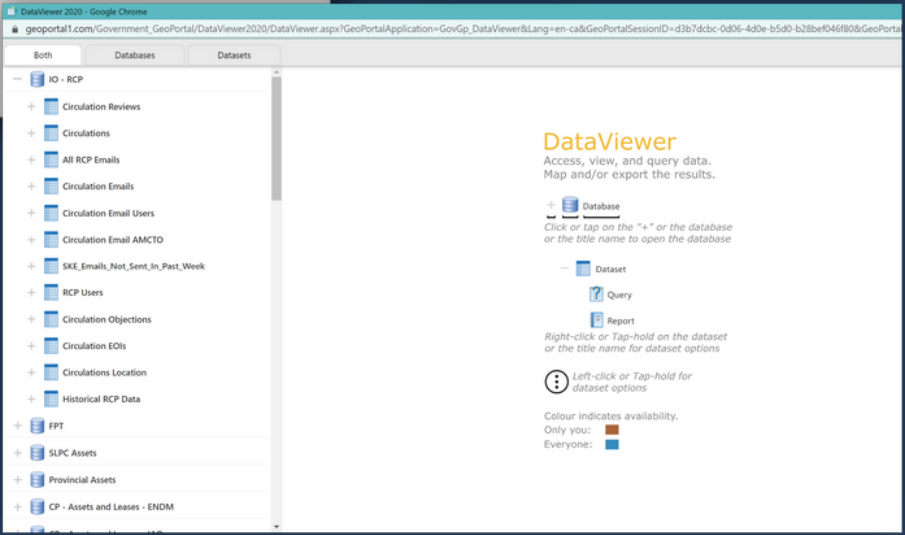
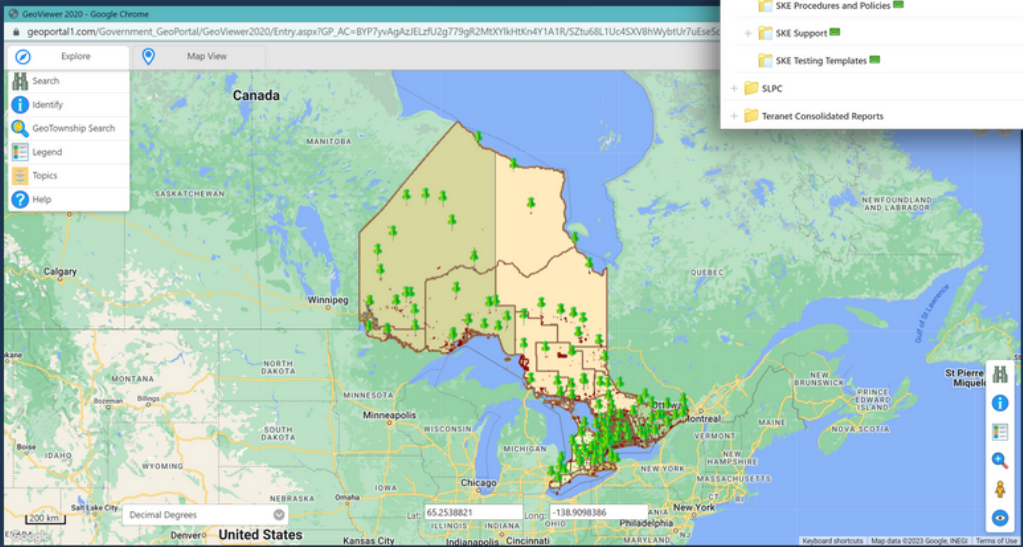
SC2 Methodology

The technologies are very versatile and can be deployed in a fully hosted or distributed format. This means that your business data can remain in its existing environment while data from internal and external sources can be integrated, geo-enabled, and securely published to different user groups.



DocumentViewer

A document management application that can securely publish and share large volumes of documents.



DataViewer

A tabular data application that has versatile query and reporting tools.